

St. Leonard's Catholic Primary School



Prospectus



Welcome



I am delighted to welcome you to St. Leonard's Catholic Primary School. It is a pleasure to be the Headteacher of such a friendly, vibrant and inclusive school.

Our motto is 'We Learn, Grow and Shine in the Light of Jesus' and our pupils have the opportunity to thrive and grow every day.

Pupils are encouraged to be kind and respectful to each other and are supported to become the best they can be. As a school, we work alongside all members of our local community, parents and carers, parish members, staff and governors, to ensure the best possible outcomes for our pupils.

We are a friendly, welcoming school where excellence in education is always our goal. Our staff are kind, caring, supportive and professional. Our children are happy, engaged, enthusiastic, inquisitive, creative, confident and ambitious.

For all the latest information about St. Leonard's, check out our social media page or visit our website. If you would like to visit school please contact the school office.

Mrs D Dunn
Headteacher





School times

School opens at 8.45 am for an 8.55 am registration; registration closes at 9.00 am prompt. The school day ends at 3.30 pm.

Wrap-around Childcare

We offer Breakfast Club from 7.30 am every day where children can enjoy a healthy breakfast, setting them up for their day of learning. We are also taking part in the Department for Education's Breakfast Club initiative which runs from 8.30 am and is free of charge - children must be booked onto this in advance. After school provision runs from 3.30 pm to 6.00 pm and offers a range of activities, snacks and drinks. Places must be booked in advance via the Arbor system.

Extracurricular Activities

We pride ourselves on the variety of extra-curricular activities available at St. Leonard's; including, arts & crafts, performing arts, sporting activities (from karate to gymnastics, to hula hooping to football). These clubs change termly.

Our Curriculum



All our pupils have the potential to develop their academic, social, spiritual and emotional growth as we provide a curriculum that responds to their needs.

By focusing on subject specific knowledge, skills and understanding, we have designed a curriculum that will develop pupils, in line with the National Curriculum, and encourage learners to be:

- Curious
- Resilient
- Responsible
- Confident
- Independent

The curriculum ensures that academic success, as well as physical development, wellbeing and mental health are prioritised to support the development of the whole child and promote a positive attitude to learning.

At St. Leonard's we never miss an opportunity to 'learn' something new. We believe that being ready and prepared for learning is essential, as enabling life-long learners through exciting and engaging lessons is key to our success.

Through discovery and exploration, the children become motivated and engaged in their learning, enjoying the opportunities to deepen their thinking skills and apply their growing knowledge in different contexts.



School Uniform



Pupils are expected to wear a navy-blue sweatshirt, cardigan or jumper. A sky-blue polo shirt with an optional navy trim, grey trousers, skirt or a tunic and black shoes or trainers with no distinguishing marks or logos.

In the summer term children may wear a blue/white checked dress or grey shorts. For P.E. the children are expected to wear a white or navy t-shirt and navy shorts or joggers.





All pupils are given the opportunity to 'grow' and develop, socially and emotionally, as well as academically, throughout their time in St. Leonard's.

There are opportunities for all of our children to 'shine' everyday as we actively encourage and celebrate our pupils' achievements in life - both in and out of school. Pupil successes are recognised throughout the week and during our weekly 'Values Assembly'.



SEND

Staff are supported by a highly skilled SEND Co-ordinator within school who oversees the whole provision. We will also seek advice and recommendations from other professionals to ensure our pupils are getting the best support.

Best practice involves clear communication between home and school. Parents/carers are involved in every stage of the provision provided for pupils with SEND as your voice is valued and is integral to how we support your child.

The child's voice is meaningful and essential to ensure a happy school life.



**CHADWICK'S
KITCHEN**

Our award winning in-house catering team Chadwick's Kitchen, provide catering services across the Trust.

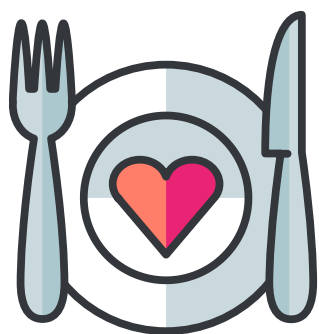
We use fresh ingredients to prepare healthy and nutritionally balanced meals each day. The majority of our menus are homemade by our chefs in our kitchens.

Staff are trained to accommodate medical diets and work in partnership with parents to ensure these needs are met. As part of the Trust's commitment to sustainability, we regularly review food miles and continue to work to reduce food waste.

Parents/Carers can pay for school meals using ParentPay.

Pupils entitled to free meals are allowed to purchase food to the value of a free school meal allowance daily.

Pupils also have the option to bring a packed lunch (nuts or nut-based products aren't permitted). Find out more:
www.bccet.org.uk/chadwicks-kitchen/



Our Trust



We are proud to be part of Bishop Chadwick Catholic Education Trust.

We are a catholic multi-academy Trust and currently have thirty schools, five secondary schools (four with sixth forms), and twenty five primary schools (16 have nursery provision).

The Trust covers the east part of the Diocese of Hexham and Newcastle, we have schools in East Durham, South Tyneside and Sunderland.

Our family of schools work closely together so that can pupils can flourish. As part of the Trust effective transition is supported by our close relationships, and pupils benefit from a shared, progressive curriculum and common expectations.

Find out more: www.bccet.org.uk



We have 30 schools
in our Trust

11,495 pupils in our
family of schools

1,338 staff in our
Trust



Bishop Chadwick
Catholic Education Trust



Get in touch

WE ARE
HERE



www.stleonardsprimary.org.uk



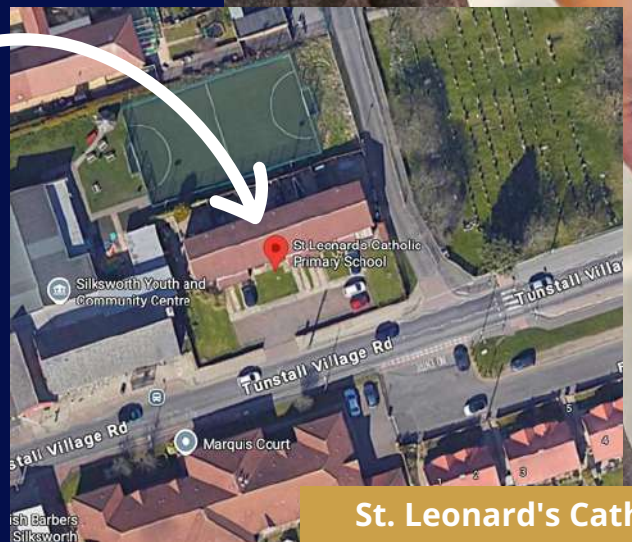
0191 521 0300



sle_office@stleonardsprimary.org.uk



@103405538964917/



**St. Leonard's Catholic
Primary School,
Silksworth, Sunderland
SR3 2BB**

'We Learn, Grow, and Shine in the Light of Jesus'



Proud to be part of
Bishop Chadwick
Catholic Education Trust